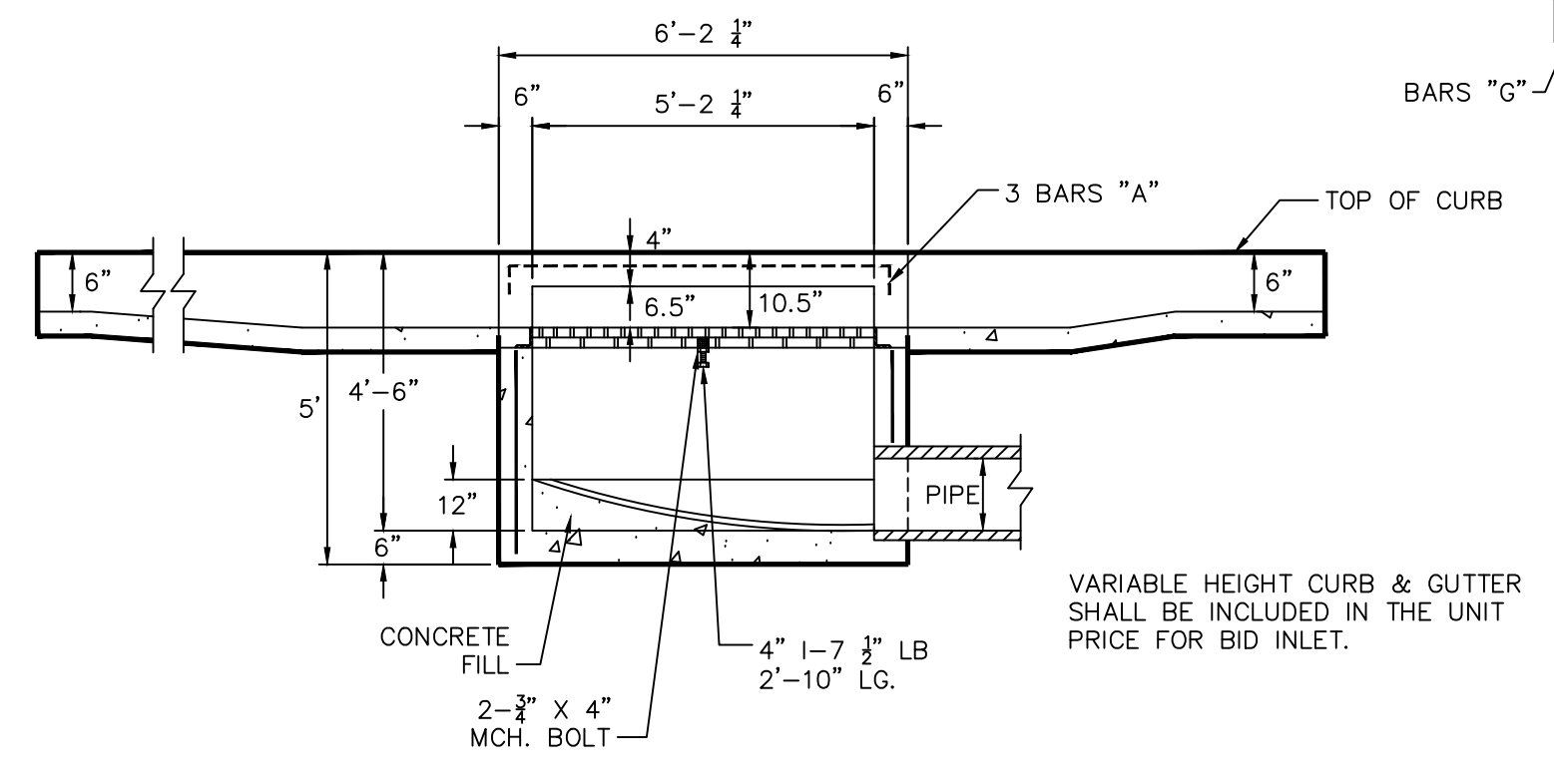
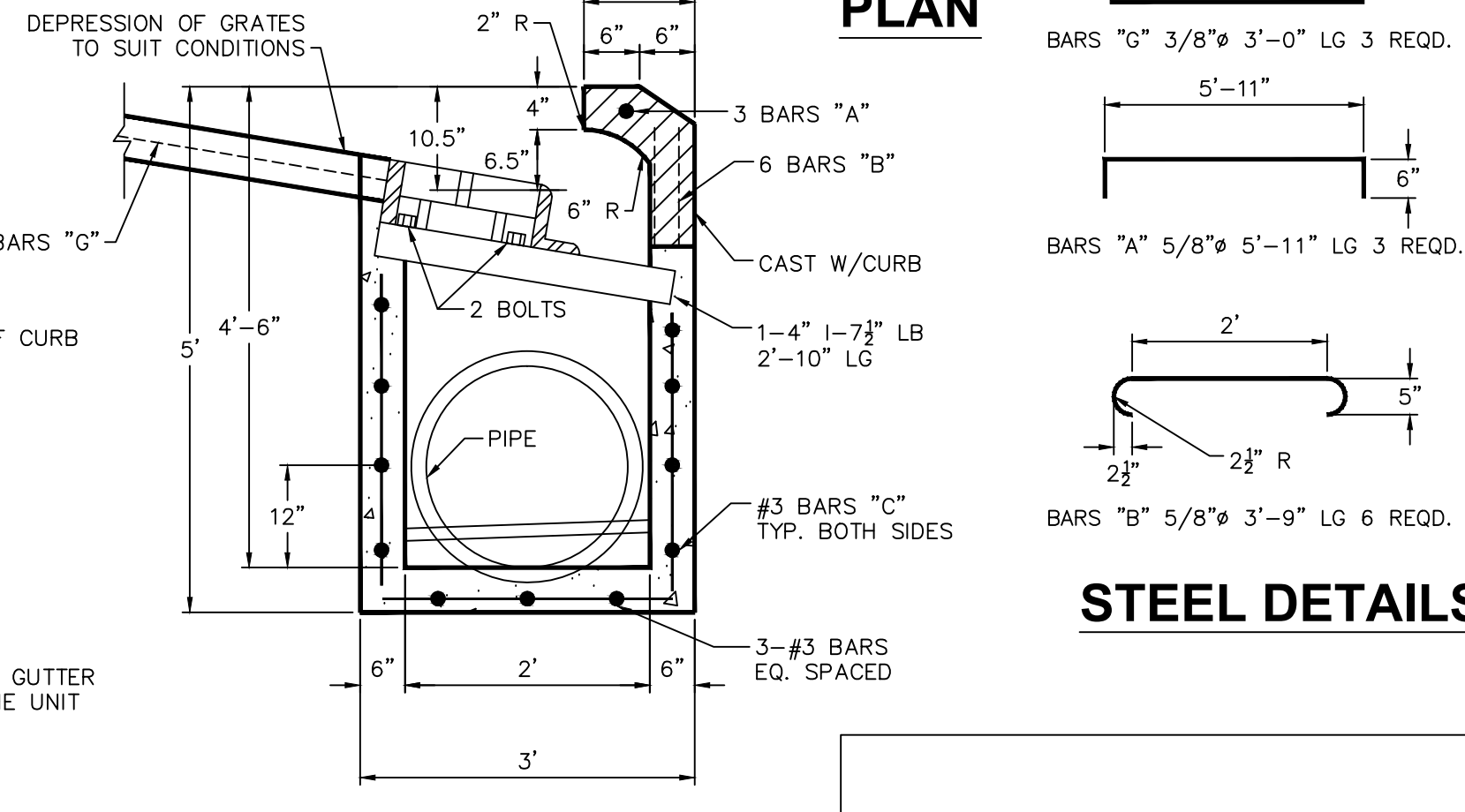


SECTION C-C



SECTION B-B

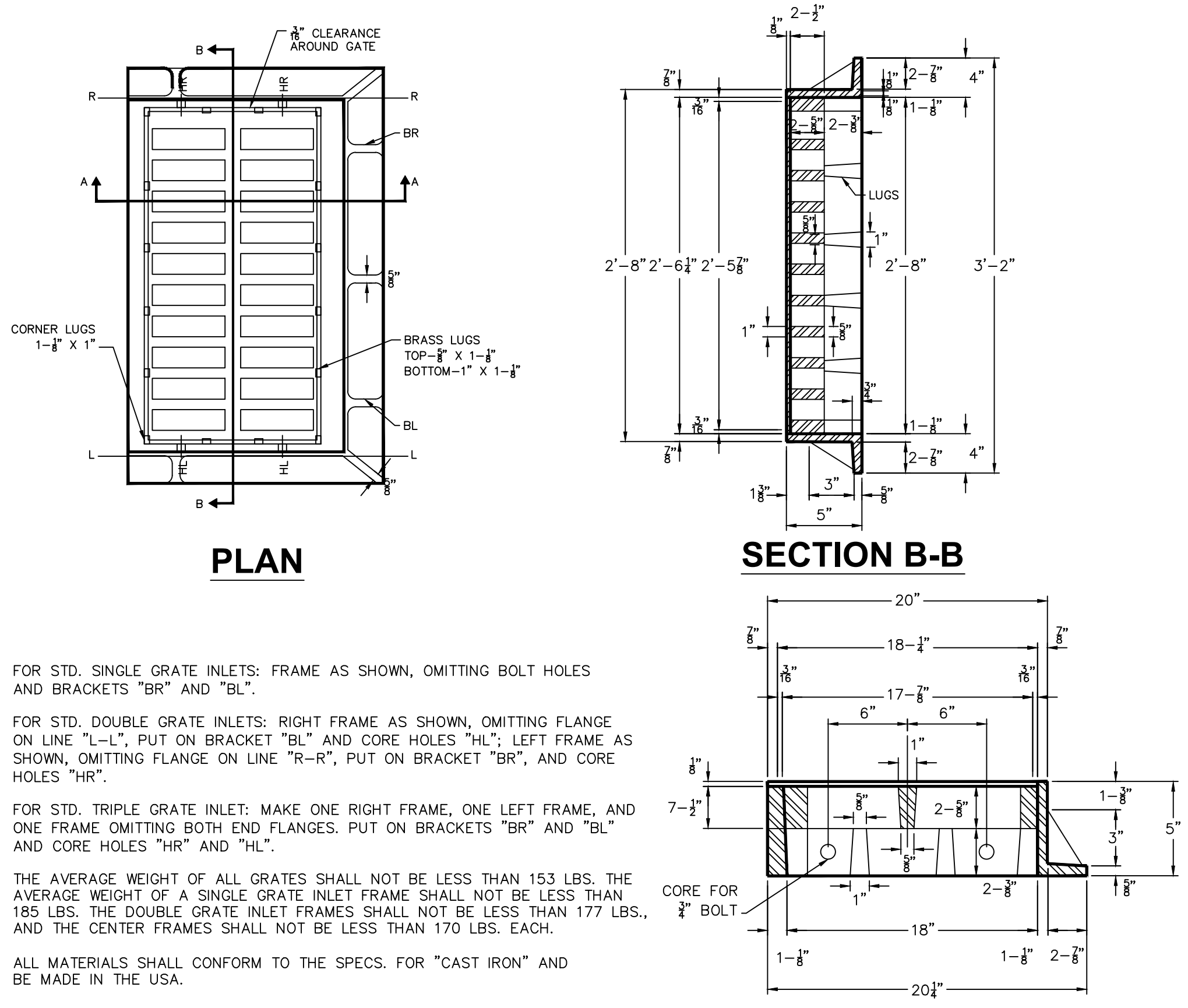


SECTION A-A

STEEL DETAILS

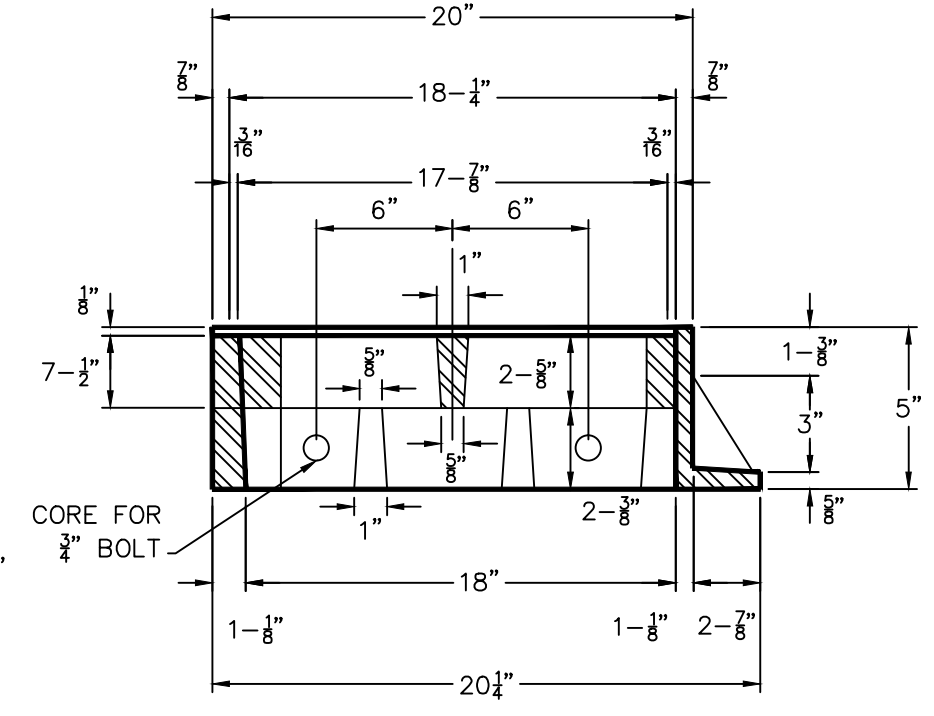
REINFORCING STEEL- NO. 3 1/2\"/>

DOUBLE GRATE INLET



PLAN

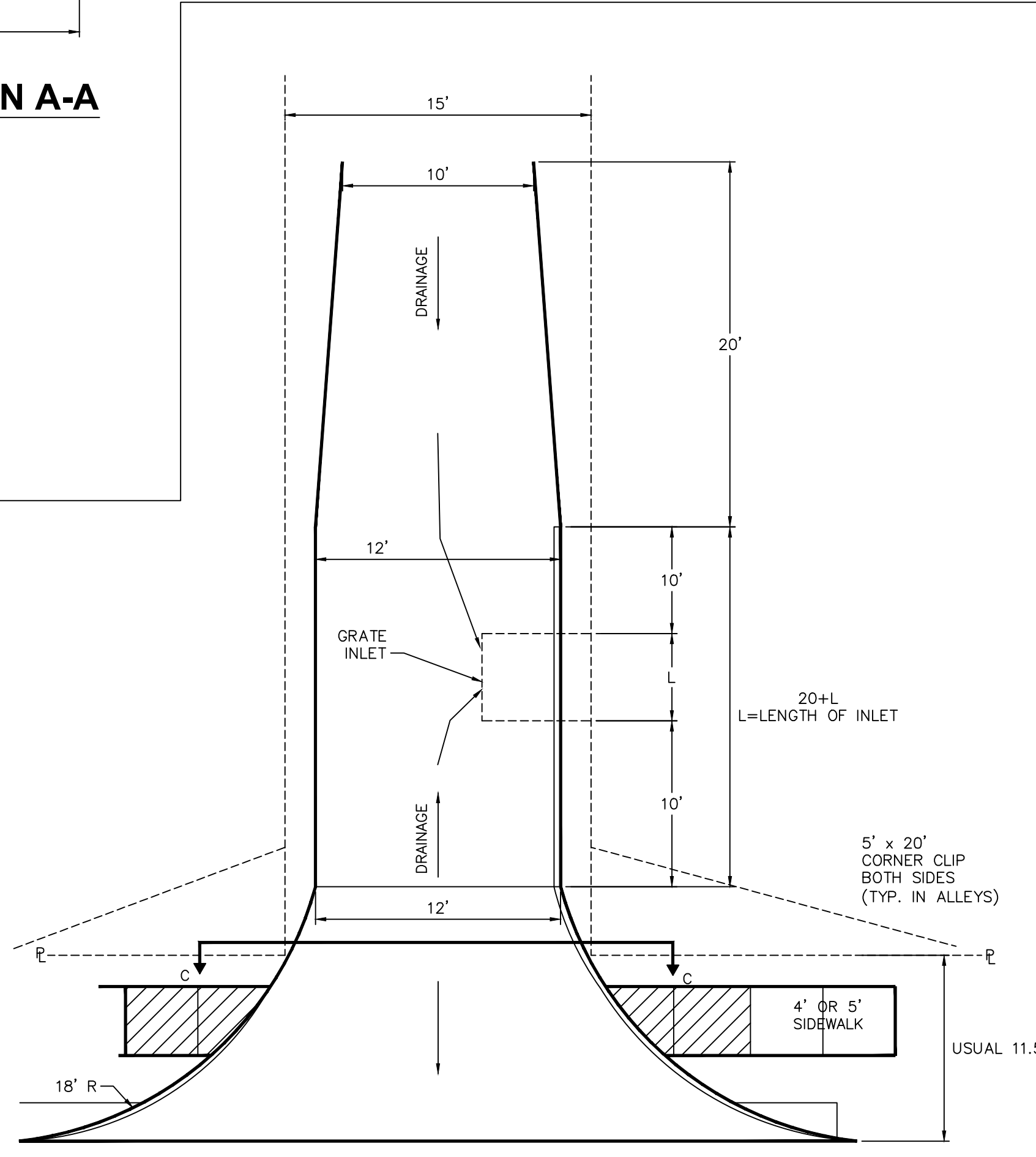
SECTION B-B



SECTION A-A

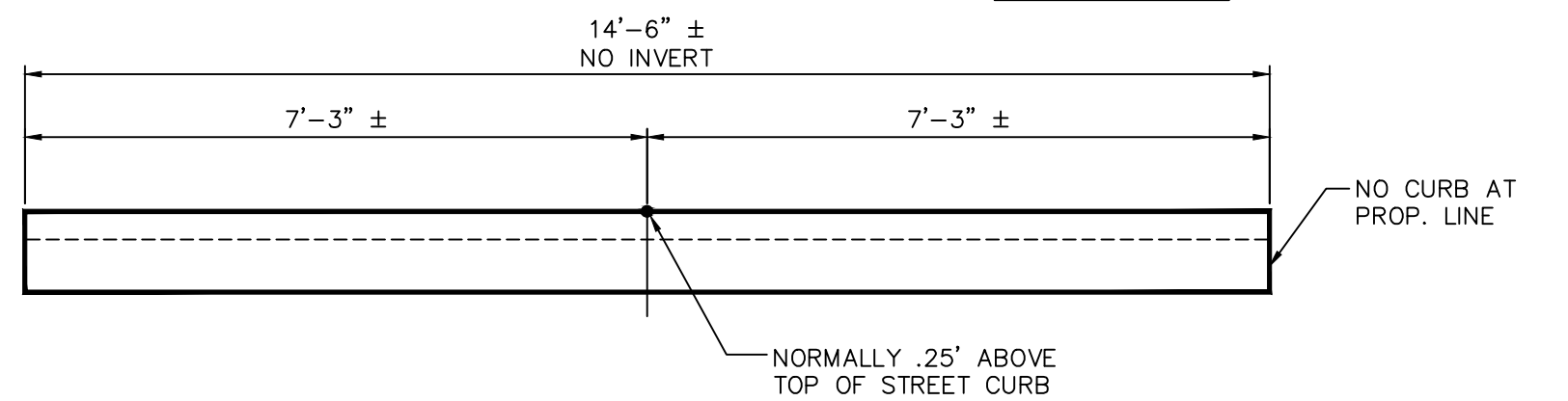
FOR STD. SINGLE GRATE INLETS: FRAME AS SHOWN, OMITTING BOLT HOLES AND BRACKETS "BR" AND "BL".
 FOR STD. DOUBLE GRATE INLETS: RIGHT FRAME AS SHOWN, OMITTING FLANGE ON LINE "L-L", PUT ON BRACKET "BL" AND CORE HOLES "HL"; LEFT FRAME AS SHOWN, OMITTING FLANGE ON LINE "R-R", PUT ON BRACKET "BR", AND CORE HOLES "HR".
 FOR STD. TRIPLE GRATE INLET: MAKE ONE RIGHT FRAME, ONE LEFT FRAME, AND ONE FRAME OMITTING BOTH END FLANGES. PUT ON BRACKETS "BR" AND "BL" AND CORE HOLES "HR" AND "HL".
 THE AVERAGE WEIGHT OF ALL GRATES SHALL NOT BE LESS THAN 153 LBS. THE AVERAGE WEIGHT OF A SINGLE GRATE INLET FRAME SHALL NOT BE LESS THAN 185 LBS. THE DOUBLE GRATE INLET FRAMES SHALL NOT BE LESS THAN 177 LBS., AND THE CENTER FRAMES SHALL NOT BE LESS THAN 170 LBS. EACH.
 ALL MATERIALS SHALL CONFORM TO THE SPECS. FOR "CAST IRON" AND BE MADE IN THE USA.

INLET GRATE & FRAME

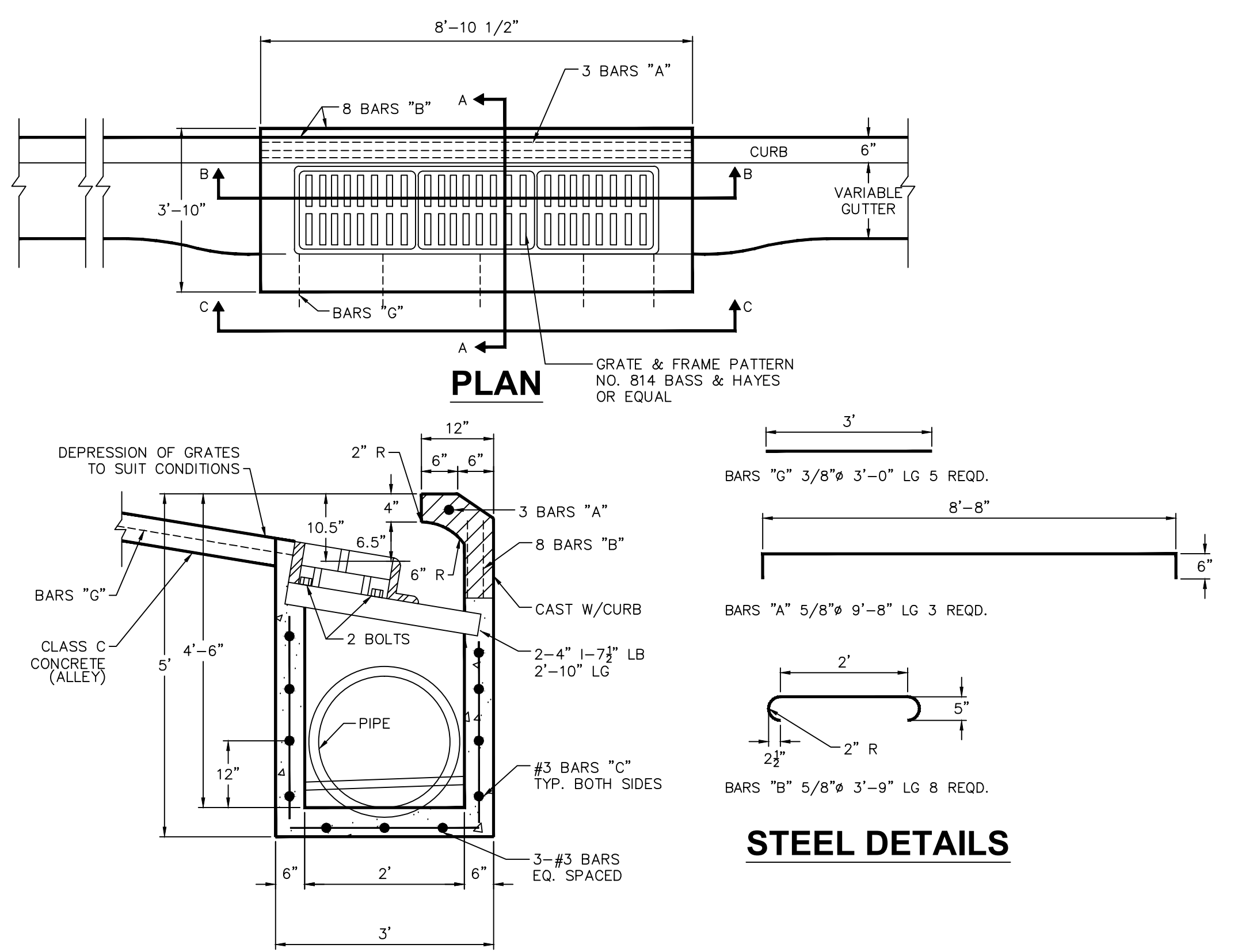


ALLEY W/GRATE INLET (INLET LOCATION)

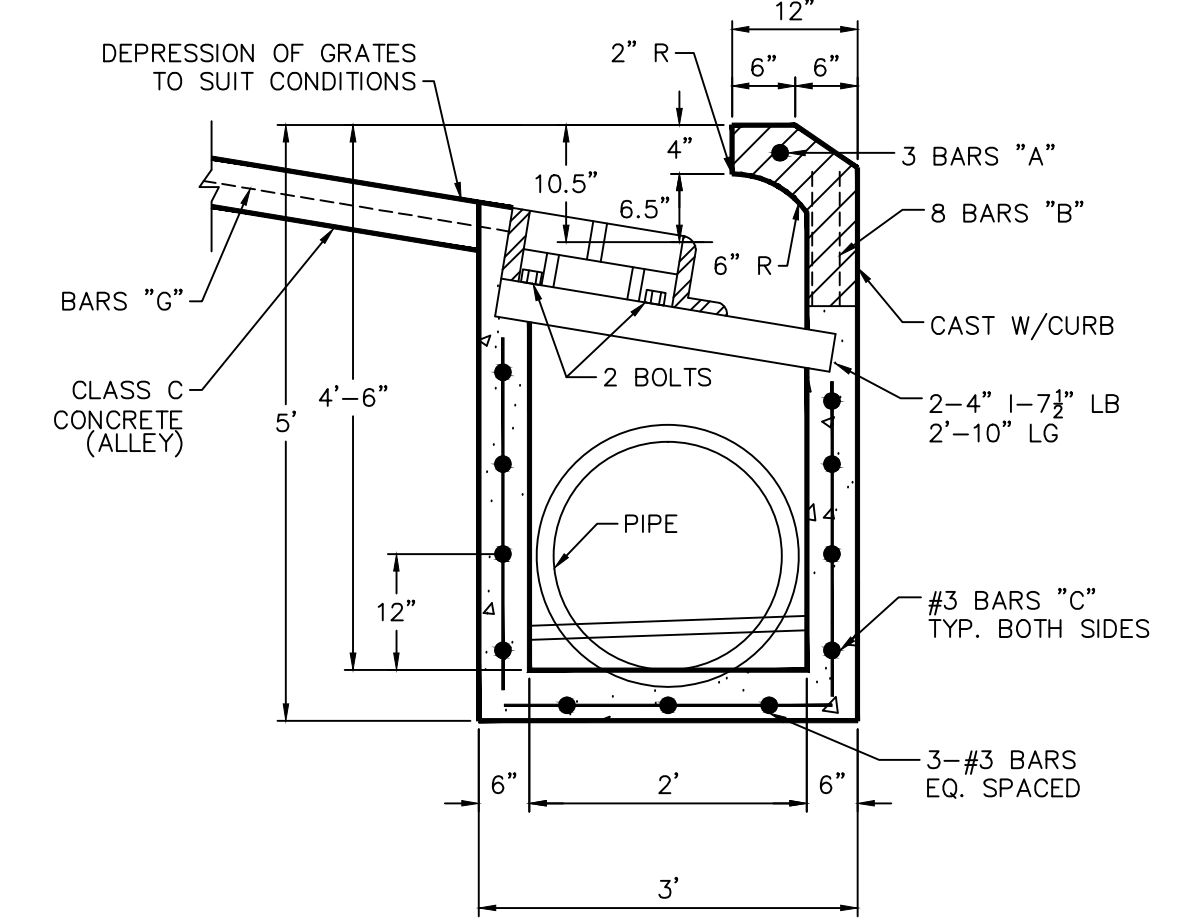
NOTE:
MAX SLOPE OF 2% @ SIDEWALK



SECTION C-C

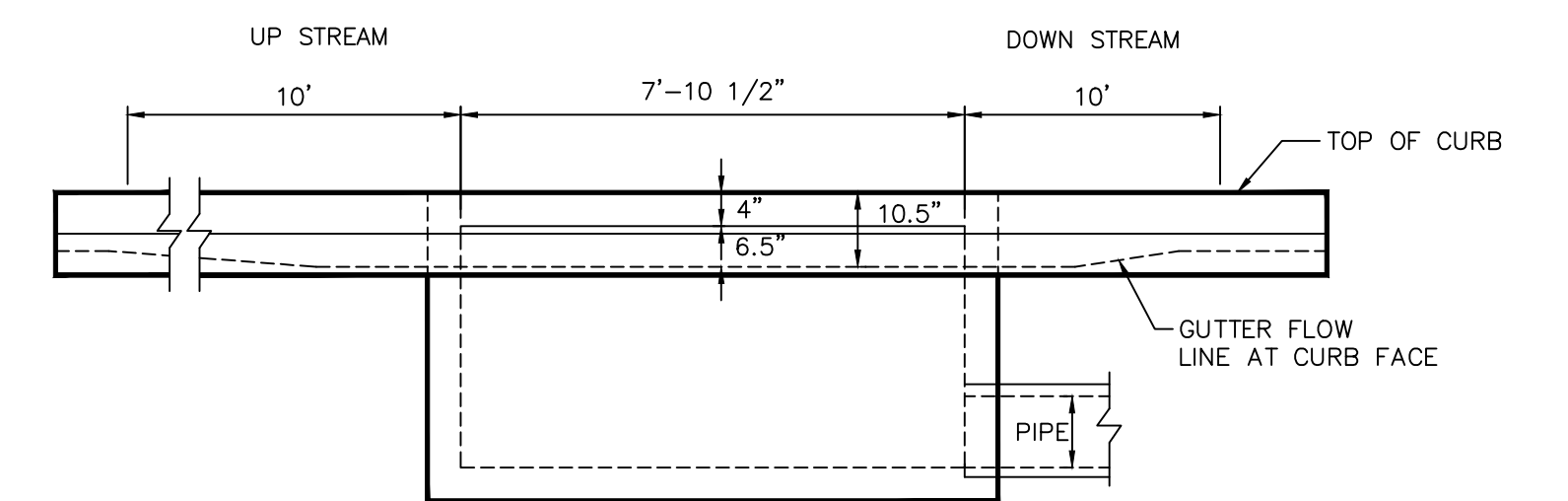


PLAN

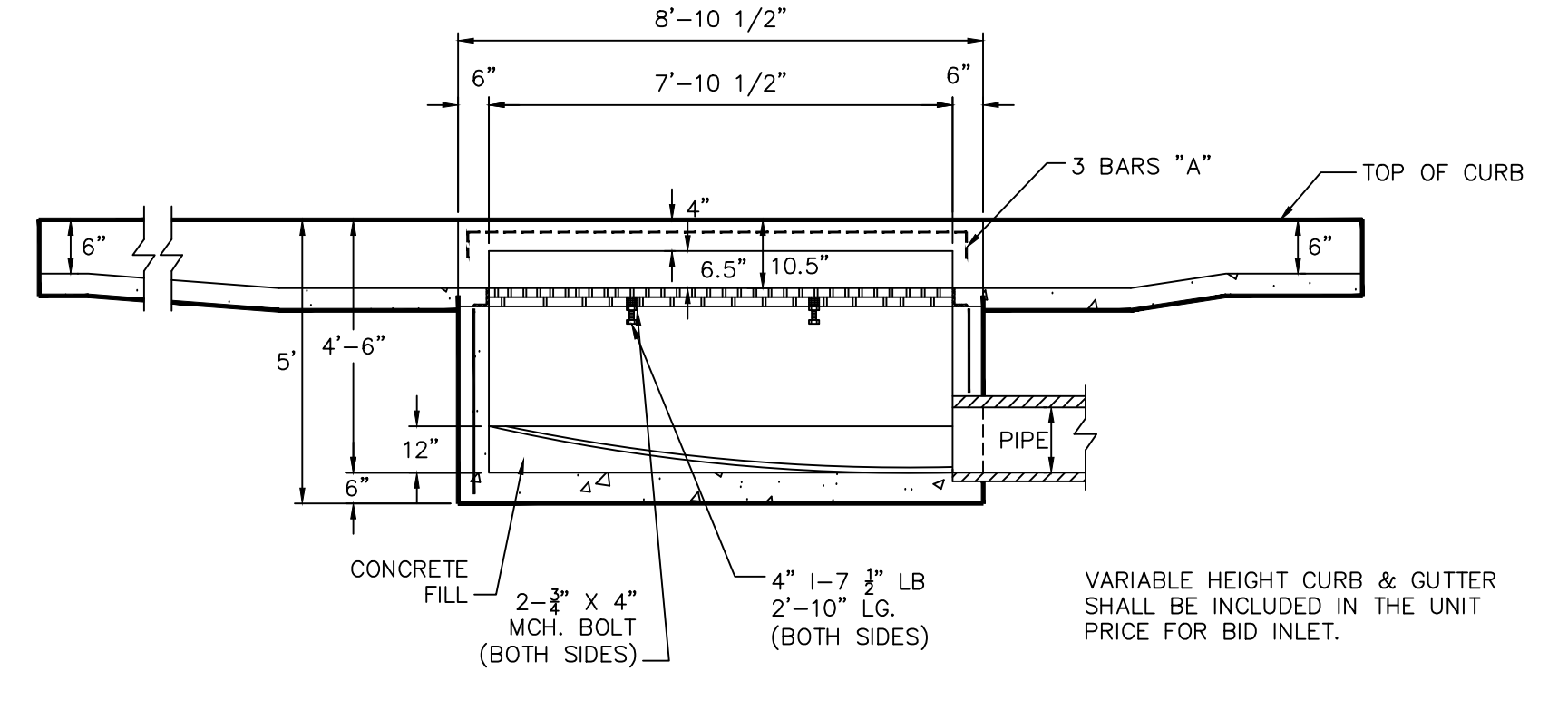


SECTION A-A

STEEL DETAILS



SECTION C-C



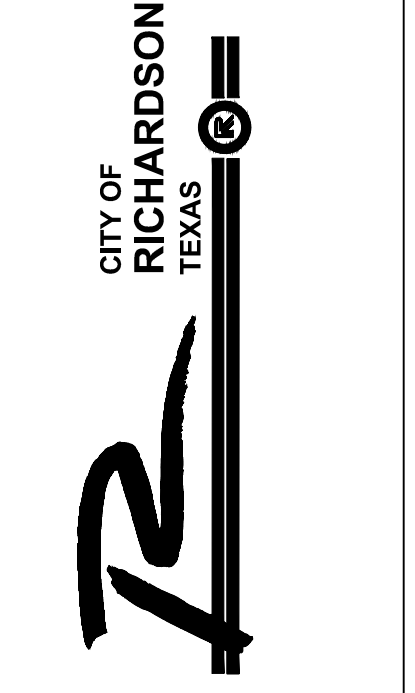
SECTION B-B

TRIPLE GRATE INLET

NOTES:
1. CONCRETE SHALL BE CLASS A FOR INLET BOXES.
2. ALLEY PAVEMENT SHALL BE CLASS C CONCRETE.

Revisions:

 City of Richardson
 411 W. Arapaho Road
 Suite 204
 Richardson, Texas 75080
 voice: 972 744-4280
 fax: 972 744-5804
 Drawn By: RGB
 Checked By: COR



STANDARD DETAILS
City of Richardson, Texas

NO ADDITIONS OR CHANGES TO STANDARD DETAIL SHEETS UNLESS APPROVED BY CITY OF RICHARDSON

24"x36" Scale: NTS
 11"x17" Scale: NTS
 Vertical Scale: NA
 Project Number: XXX
 Issue Date: 01 MAY 14
 Sheet Title:
ALLEY
 Sheet No.:

C-9