

City Council Work Session Handouts

February 11, 2019

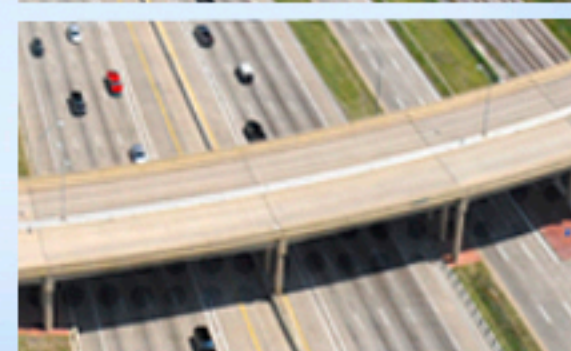
- I. Review and Discuss the 2017-2018 Comprehensive Annual Financial Report (CAFR) Presentation
(This presentation will be posted on February 12)

- II. Review and Discuss the Cotton Belt Trail – UT Dallas Segment



Cotton Belt Trail Status Report City Council Briefing: February 11, 2019

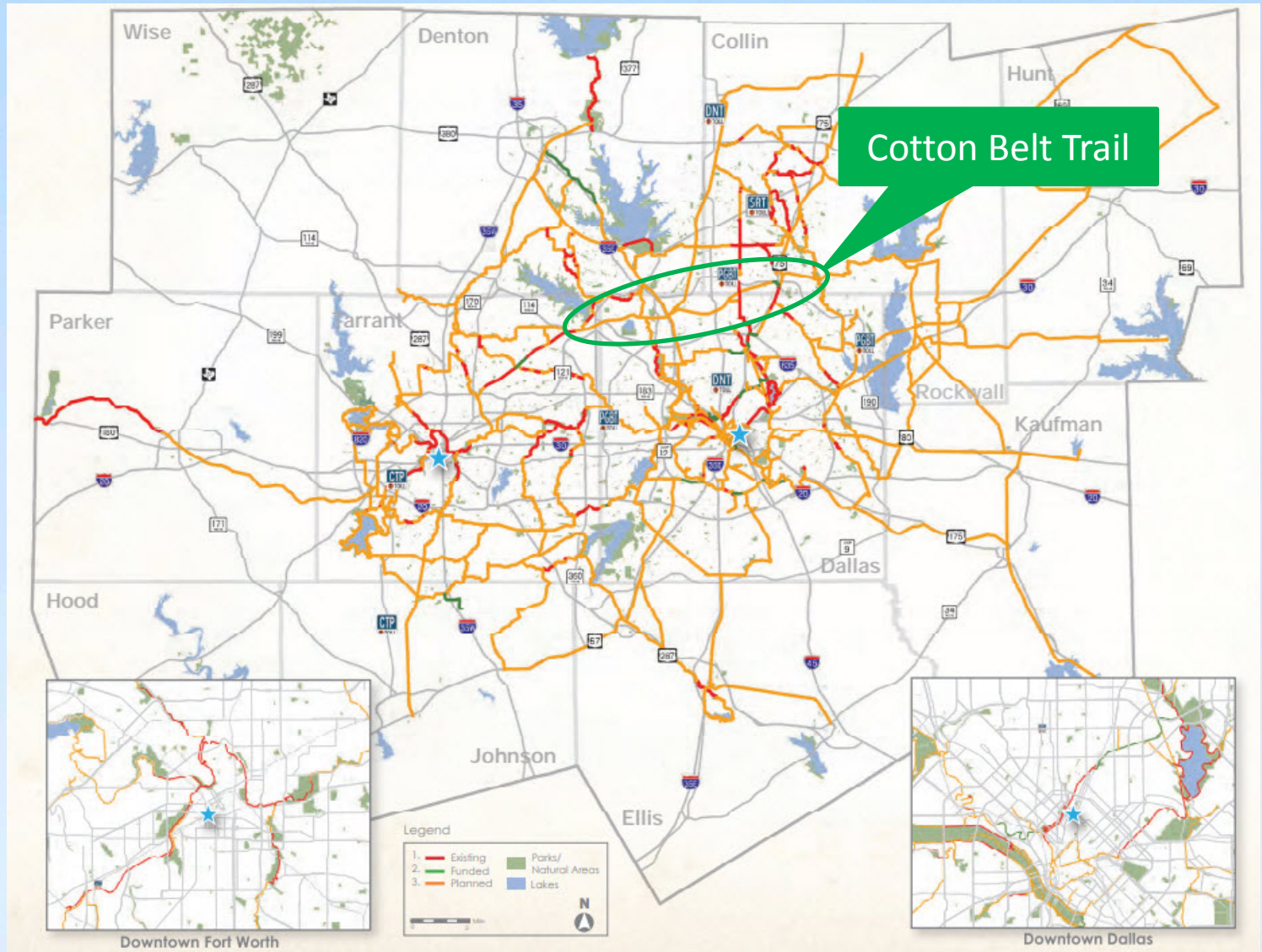
City of Richardson
Transportation & Mobility



Council Goals

- Strategies
 - Enhance the quality of life for our stakeholders
 - Protect and strengthen stakeholder investments in the City
- Tactic
 - Continue to advance DART Work Plan
 - Ongoing support of Cotton Belt Rail System

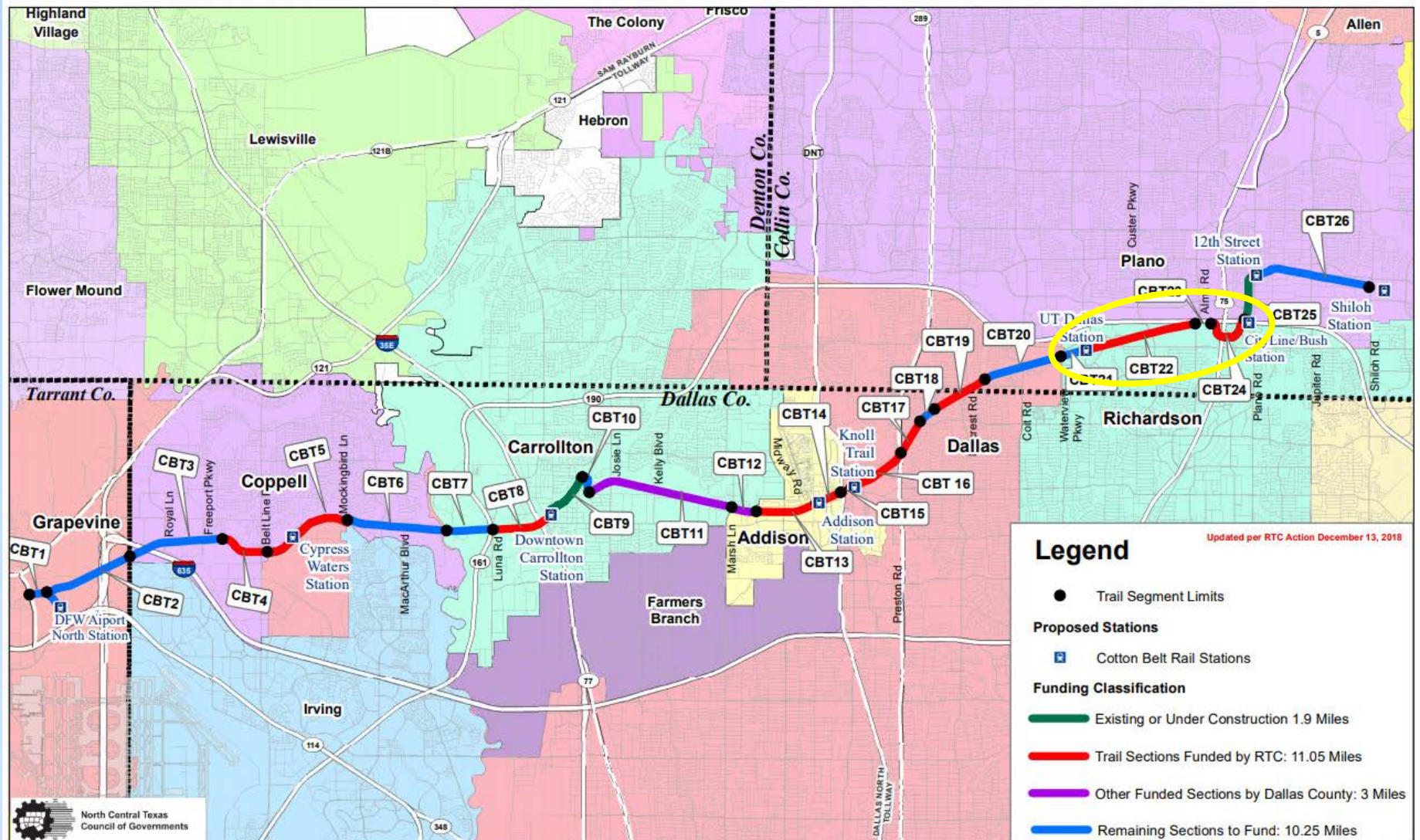
Regional Veloweb



Cotton Belt Trail Overview

- Grapevine to Plano (Shiloh Rd Station)
 - 26.6 miles
 - 26 Segments
 - 11 Critical Segments
- Richardson
 - 3.5 miles
 - 4 Segments
 - 2 Critical Segments

Cotton Belt Trail Alignment



North Central Texas Council of Governments



Trail Logistics

- Final Environmental Impact Statement/Record of Decision – November 9, 2018
- Design by DART in conjunction with rail design
DART to manage and construct funded trail segments

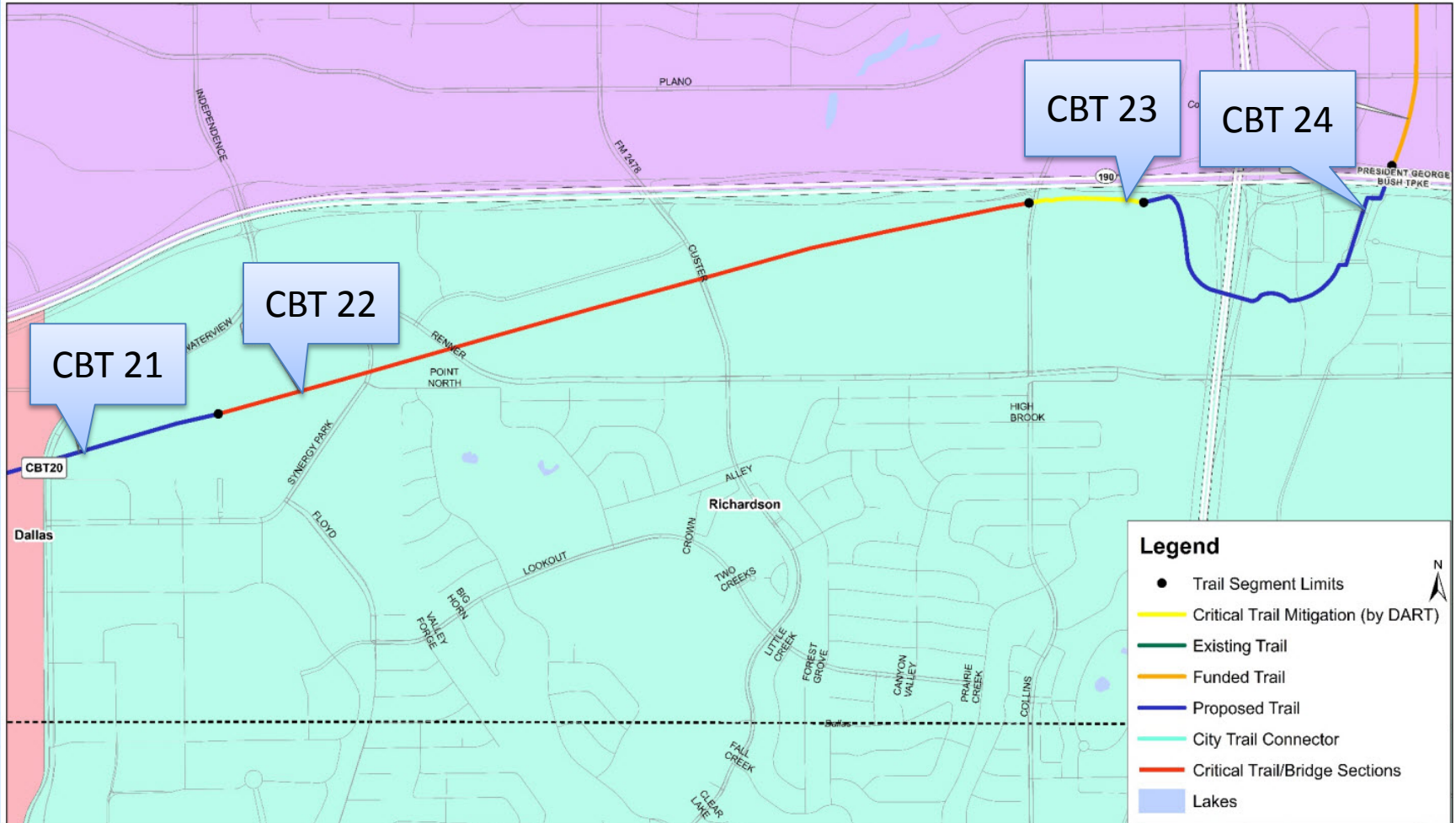
Trail Characteristics

- Minimum 12' wide
- Trail bridges along rail bridges
- Two at-grade signal crossings
- Quiet zones at at-grade crossings
- Betterments and amenities to be discussed
 - Sound Walls: Short & Tall
 - Fencing
 - Water fountains
 - Benches

Trail Alignment

Cotton Belt Regional Veloweb Trail Corridor: Trail Segments As Proposed By NCTCOG

DRAFT 03-27-2018



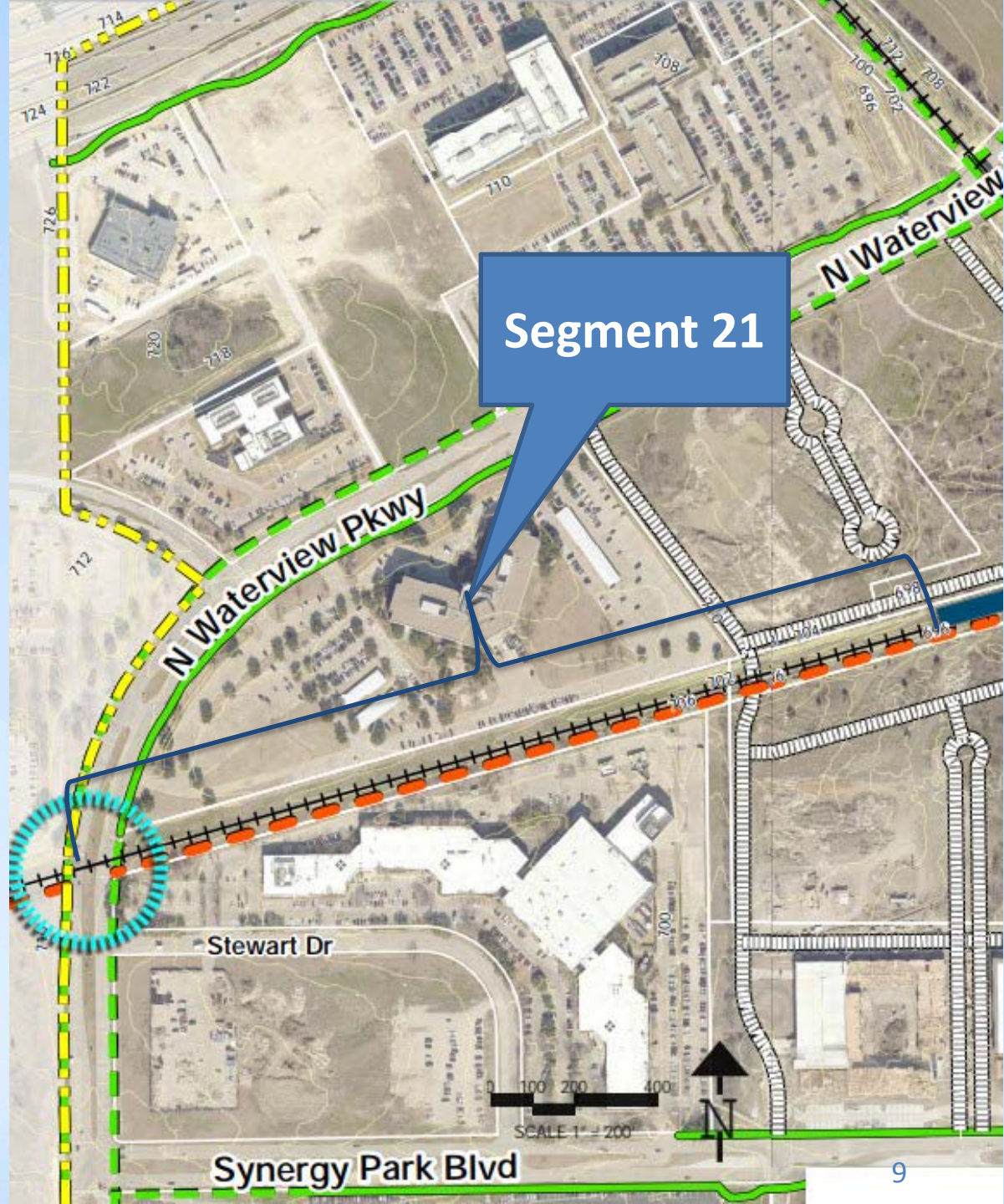
Document Path: I:\Sustainable_Development\ArcGIS\Bike_Ped\Projects\Regional Trail Corridors\Cotton Belt Corridor\Cotton Belt Logical Points (City View).mxd



0 0.425 0.85 Miles

Segment 21

- Waterview to UTD Station (west end)
- 0.4 miles
- **UNFUNDED**
- **\$600k**



Segment 22

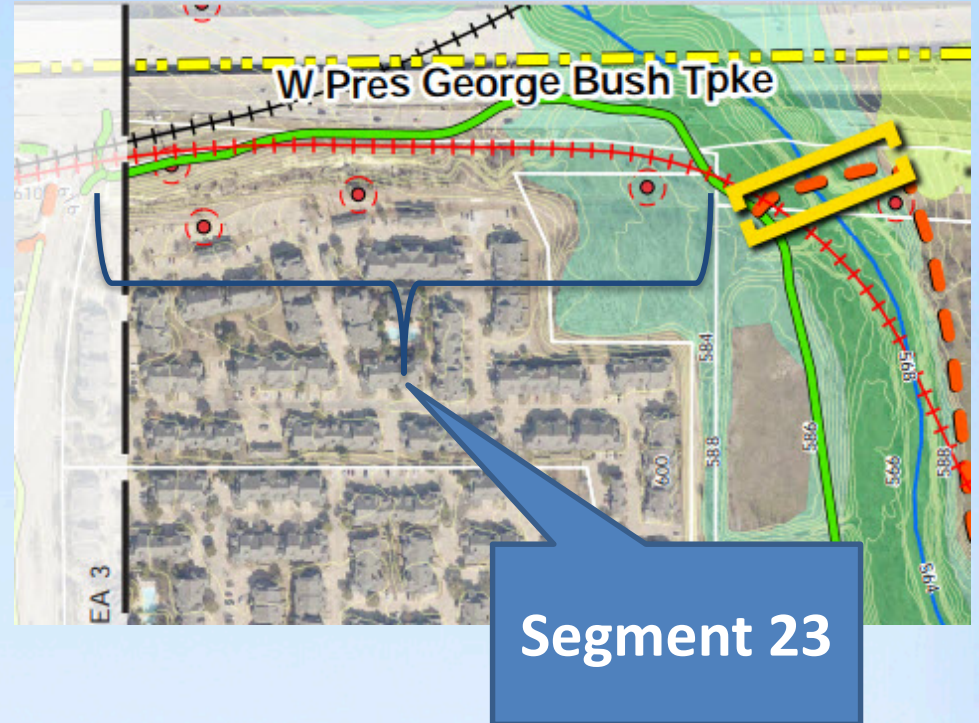
- UTD Station to Alma Rd
- 2 miles
- Critical Section
- Funded by RTC
- \$7.3 M

Segment 22



Segment 23

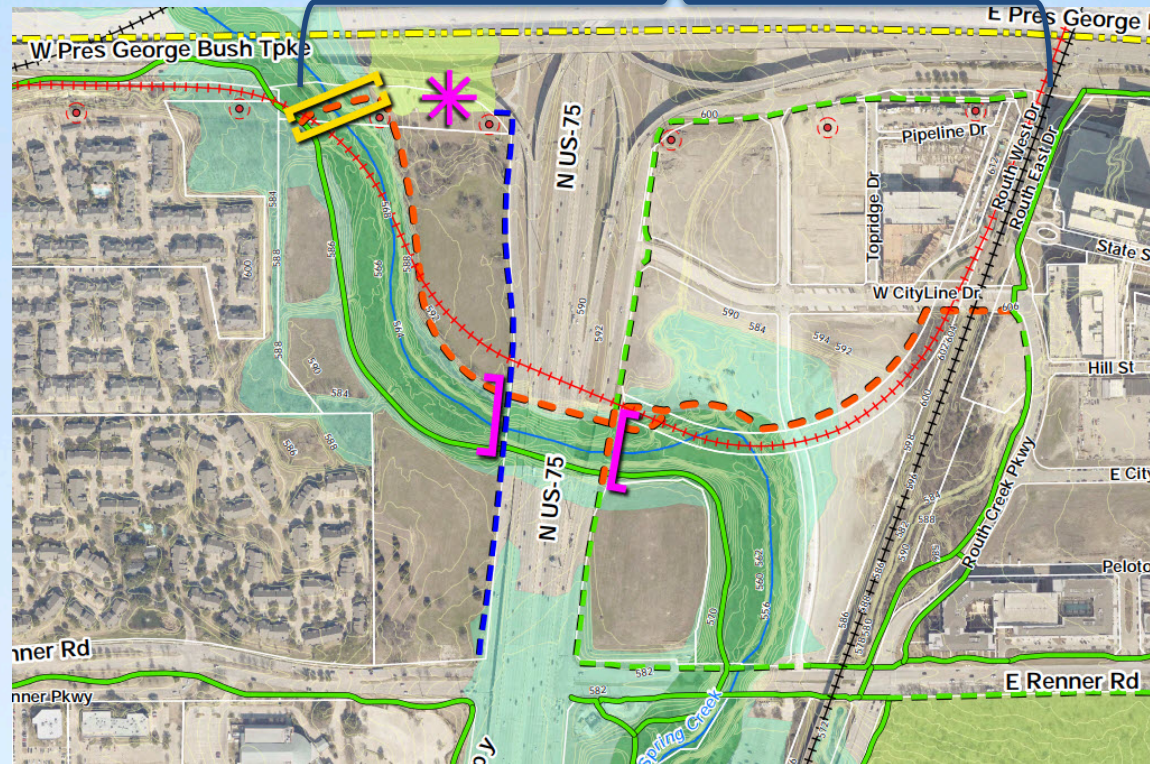
- Alma to Spring Creek Trail
- 0.25 miles
- Critical Section – existing trail DART mitigation
- \$200k



Segment 24

- Spring Creek Trail to City Limit
- 0.8 miles
- Funded through CMAQ-STBG-Partnership 3 Program
- \$2.6 M

Segment 24



Segment 21 Funding Opportunity

Transportation Alternatives Set-Aside Program

- \$5.2 M available for Eastern Subregion
- 20% match required, **higher match encouraged**
- Opened December 17, 2018
- Closes March 1, 2019

Segment 21 Project Details

- Approximately 0.4 miles in length
- Trail on north side of rail to UTD Station
- At-grade crossing at Waterview with a pedestrian/trail signal
- Estimated Construction Cost: \$595,094
- Commit to 33% local match
 - not to exceed \$200,000

TA Set-Aside Eligibility

- Projects that make non-motorized transport safe, convenient, and appealing
- Regionally significant
- Shovel ready
- Funding Commitment
- Project ideas: on-street and off-street bicycle facilities, pedestrian and bicycle signals, missing sidewalks

Project Benefits

- Regionally Significant
 - Completes Cotton Belt Trail through Richardson
- If awarded, DART will manage and construct alongside the Rail
- Prefer to construct with rail project
 - Feasibility
 - Cost

Conclusion

- Applications due March 1
- Completes Cotton Belt Trail in Richardson
- NCTCOG Supportive
- Requesting Funding Resolution for 33% match
 - Not to exceed \$200k
 - February 25th Council Meeting